

Company: _____

Project Name: _____

Signee's Name Written Clearly: _____ Date: _____

Authorized Signature: _____

SIZE B	PRODUCED BY :	JMG	REV :	REV. B 5/6/2016
	PRODUCED ON :	5/30/14	SHEET :	1 OF 2

CALPIPE INDUSTRIES
Incorporated

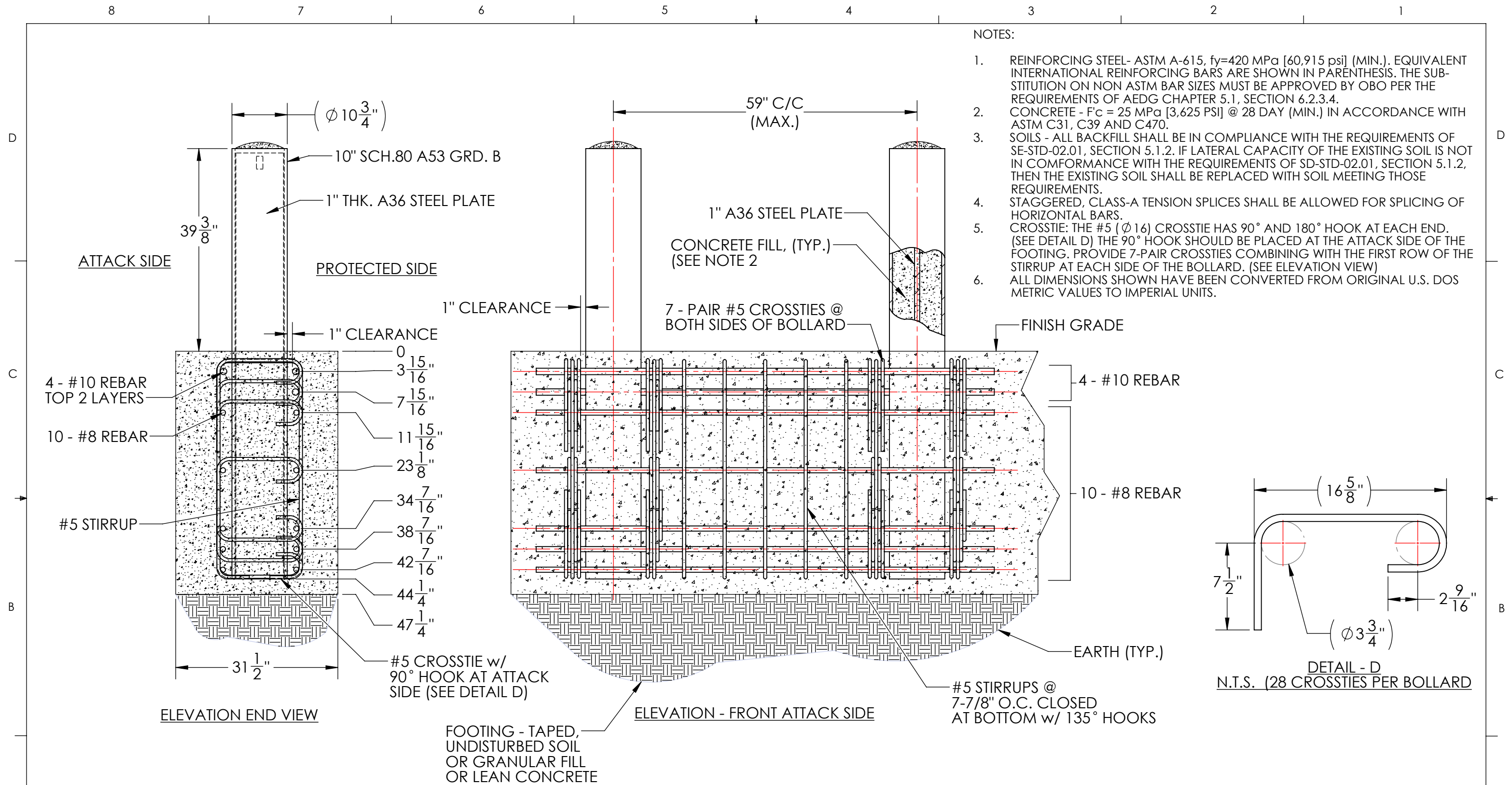
19440 S. DOMINGUEZ HILLS DR.
RANCHO DOMINGUEZ, CA 90220

www.CalPipeBollards.com
562.803.4388 Direct
562.803.9885 Fax

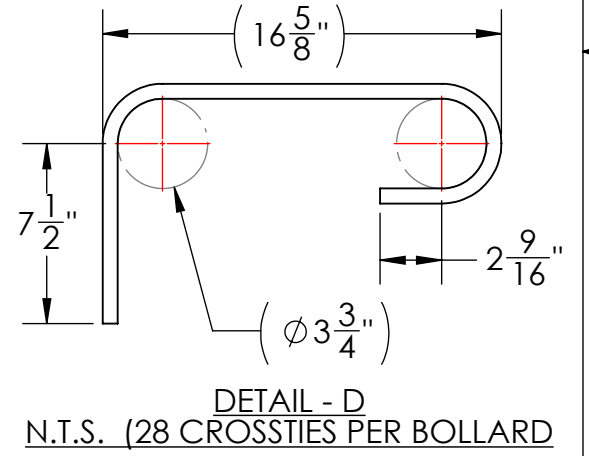
PROPRIETARY AND CONFIDENTIAL
THE INFORMATION CONTAINED IN THIS
DRAWING IS THE SOLE PROPERTY OF
CALPIPE INDUSTRIES INC. ANY
REPRODUCTION IN PART OR AS A WHOLE
WITHOUT THE WRITTEN PERMISSION OF
CALPIPE INDUSTRIES INC. IS PROHIBITED

UNLESS OTHERWISE SPECIFIED:
DIMENSIONS ARE IN INCHES
TOLERANCES:
FRACTIONAL $\pm 1/4$
ANGULAR: MACH ± 1 BEND ± 1
TWO PLACE DECIMAL THREE ± 0.010
PLACE DECIMAL ± 0.005

PDTDS22F
K12 FIXED BOLLARD



- NOTES:
- 1. REINFORCING STEEL- ASTM A-615, fy=420 MPa [60,915 psi] (MIN.). EQUIVALENT INTERNATIONAL REINFORCING BARS ARE SHOWN IN PARENTHESIS. THE SUBSTITUTION ON NON ASTM BAR SIZES MUST BE APPROVED BY OBO PER THE REQUIREMENTS OF AEDG CHAPTER 5.1, SECTION 6.2.3.4.
 - 2. CONCRETE - F'c = 25 MPa [3,625 PSI] @ 28 DAY (MIN.) IN ACCORDANCE WITH ASTM C31, C39 AND C470.
 - 3. SOILS - ALL BACKFILL SHALL BE IN COMPLIANCE WITH THE REQUIREMENTS OF SE-STD-02.01, SECTION 5.1.2. IF LATERAL CAPACITY OF THE EXISTING SOIL IS NOT IN CONFORMANCE WITH THE REQUIREMENTS OF SD-STD-02.01, SECTION 5.1.2, THEN THE EXISTING SOIL SHALL BE REPLACED WITH SOIL MEETING THOSE REQUIREMENTS.
 - 4. STAGGERED, CLASS-A TENSION SPLICES SHALL BE ALLOWED FOR SPLICING OF HORIZONTAL BARS.
 - 5. CROSSTIE: THE #5 (Ø 16) CROSSTIE HAS 90° AND 180° HOOK AT EACH END. (SEE DETAIL D) THE 90° HOOK SHOULD BE PLACED AT THE ATTACK SIDE OF THE FOOTING. PROVIDE 7-PAIR CROSSTIES COMBINING WITH THE FIRST ROW OF THE STIRRUP AT EACH SIDE OF THE BOLLARD. (SEE ELEVATION VIEW)
 - 6. ALL DIMENSIONS SHOWN HAVE BEEN CONVERTED FROM ORIGINAL U.S. DOS METRIC VALUES TO IMPERIAL UNITS.



Company: _____

Project Name: _____

Signee's Name Written Clearly: _____ Date: _____

Authorized Signature: _____

SIZE B	PRODUCED BY :	JMG	REV :	REV. B 5/6/2016
	PRODUCED ON :	5/30/14	SHEET :	2 OF 2

CALPIPE INDUSTRIES
Incorporated

19440 S. DOMINGUEZ HILLS DR.
RANCHO DOMINGUEZ, CA 90220

www.CalPipeBollards.com
562.803.4388 Direct
562.803.9885 Fax

PROPRIETARY AND CONFIDENTIAL
THE INFORMATION CONTAINED IN THIS
DRAWING IS THE SOLE PROPERTY OF
CALPIPE INDUSTRIES INC. ANY
REPRODUCTION IN PART OR AS A WHOLE
WITHOUT THE WRITTEN PERMISSION OF
CALPIPE INDUSTRIES INC. IS PROHIBITED

UNLESS OTHERWISE SPECIFIED:
DIMENSIONS ARE IN INCHES
TOLERANCES:
FRACTIONAL ± 1/4
ANGULAR: MACH ± 1 BEND ± 1
TWO PLACE DECIMAL THREE ± 0.010
PLACE DECIMAL ± 0.005

PDTDS22F
K12 FIXED BOLLARD