

# J (LOGIC 5.0) JACKSHAFT OPERATOR



## DATA SHEET

Section 08 71 13

### Key Features

STANDARD APPLICATION  
RATED DUTY CYCLE

Recommended for lighter rolling steel doors/grilles and high or vertical-lift sectional  
Standard-duty: Up to 25 cycles/hour and up to 90 cycles/day  
(using continuous-rated motor)

OPERATOR SPEED  
LIMIT SETTINGS

8-9 Inches per second  
Mechanical

EMERGENCY DISCONNECT FOR MANUAL OPERATION

Floor-level emergency release sash chain

EMERGENCY DISCONNECT WITH AUTO-RECONNECT

Reconnects when tension is removed from emergency release sash chain

PROGRAMMING

Control function selector dial/tactile button

CIRCUIT BOARD

Solid-state Logic 5.0 circuit board

TIMER-TO-CLOSE

Programmable in 1 second and 15 second increments up to 68 minutes, standard

CLUTCH

Standard adjustable friction clutch

MID-STOP

Programmable

RUN TIME PROTECTION

Maximum run timer

MOTOR REVERSE ACTION PROTECTION

Delay-on-reverse circuit

MOTOR OPERATOR WALL CONTROL

3-Button Control Station with Maintenance Alert System (MAS)

### Specifications

RADIO RECEIVER

LiftMaster Security+2.0 and backwards compatible to Security+ 315 or 390 MHz  
residential garage openers

VOLTAGE CONNECTIONS

Single-phase: 115V/230V dual voltage; 3-phase: 208V/230V/460V dual voltage;  
3-phase: 575V single voltage

CONTROL CIRCUIT

5VDC NEC class 2

DRIVE REDUCTION

Belt/chain & pulley; first-stage heavy-duty 5L V-belt; second-third-fourth stages  
#48 chain; #50 output sprocket chain

BEARINGS/BUSHINGS

Industrial ball bearings on a 1" output shaft; heavy-duty oil-filled bushings on  
reduction shafts

BRAKE

Standard on 3/4 and 1 HP operators; optional on 1/2 HP; not available on 1/3 HP

CONSTRUCTION

NEMA 1 type electrical box; heavy-duty 11-gauge steel frame with durable powder  
coat finish; all reduction sprockets drilled and pinned to shafts

WARRANTY

2 years

### Installation Features

UNIVERSAL MOUNTING

Yes

MAXIMUM DOOR WIDTH

22 feet standard with additional capability\*

MAXIMUM DOOR HEIGHT

26 feet standard with additional capability\*

MAXIMUM ALLOWABLE SQUARE FOOTAGE

640 square feet

INTERNET CONNECTIVITY

myQ<sup>®</sup> Technology enables remote monitoring and control of the commercial door  
via a smart phone, tablet, or computer\*\*

\* Contact us at [Specs@LiftMaster.com](mailto:Specs@LiftMaster.com) for additional capabilities.

\*\*LiftMaster Internet Gateway and myQ app required.

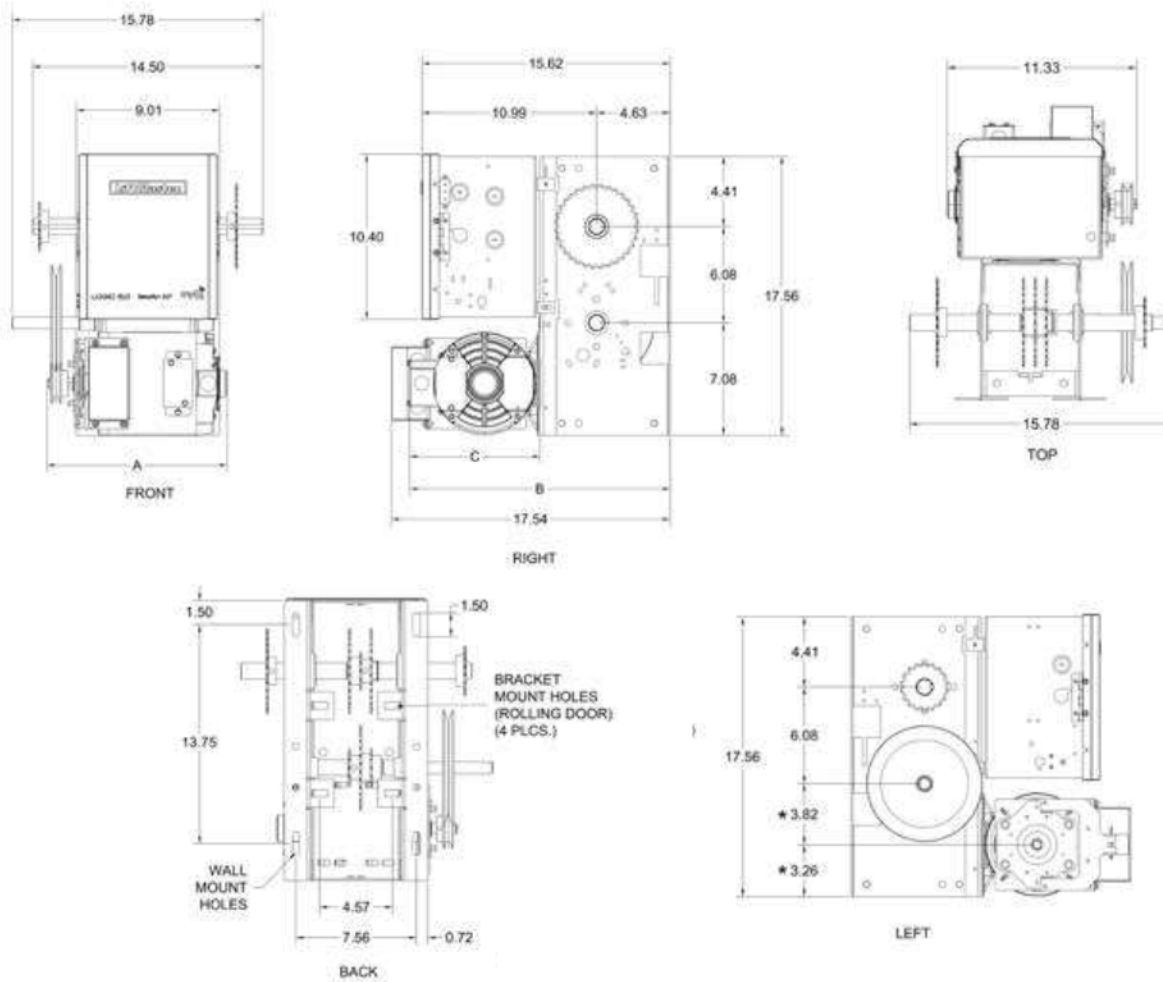
# J (LOGIC 5.0) JACKSHAFT OPERATOR



## DATA SHEET

Section 08 71 13

### Dimensions



### Capacity

MAXIMUM DOOR AREA (SQ. FT.)							
ROLLING	24 ga. Steel	22 ga. Steel	—	20 ga. 18 ga. Steel	16 ga. Steel	—	
	Aluminum Grilles	Aluminum Doors	—	Steel Grilles	—	—	
SECTIONAL	—	24 ga. 22 ga. Steel	20 ga. Steel	—	16 ga. Steel	—	
	Fiberglass	Aluminum Doors	Wood Doors	—	—	—	
	—	—	24 ga. Steel Insulated	—	20 ga. Steel Insulated	16 ga. Steel Insulated	—
HP	1/3	310	285	260	210	175	125
1/2	400	350	320	280	250	200	—
3/4	560	500	450	380	325	250	—
1	640	625	560	475	400	310	—

OPERATOR DIMENSION TABLE					
HP	PHASE	DIMENSIONS			
		A	B	C	
1/2	1	10-3/4"	16-13/32"	8-7/32"	
3/4	1	11-9/32"	16-11/32"	8-5/32"	
1	1	11-29/32"	17-1/16"	8-7/8"	
1/2	3	11-5/16"	16-7/16"	8-3/16"	
3/4	3	11-5/16"	16-13/32"	8-3/16"	
1	3	11-5/16"	16-13/32"	8-3/16"	

On steel insulated doors, a 24-gauge back panel is assumed.

If a heavier back panel is supplied, use the next higher HP rating.

Recommended max duty cycles: 25 per hour, up to 90 per day.