

ALL-O-MATIC®



818-787-1988

allomatic.net

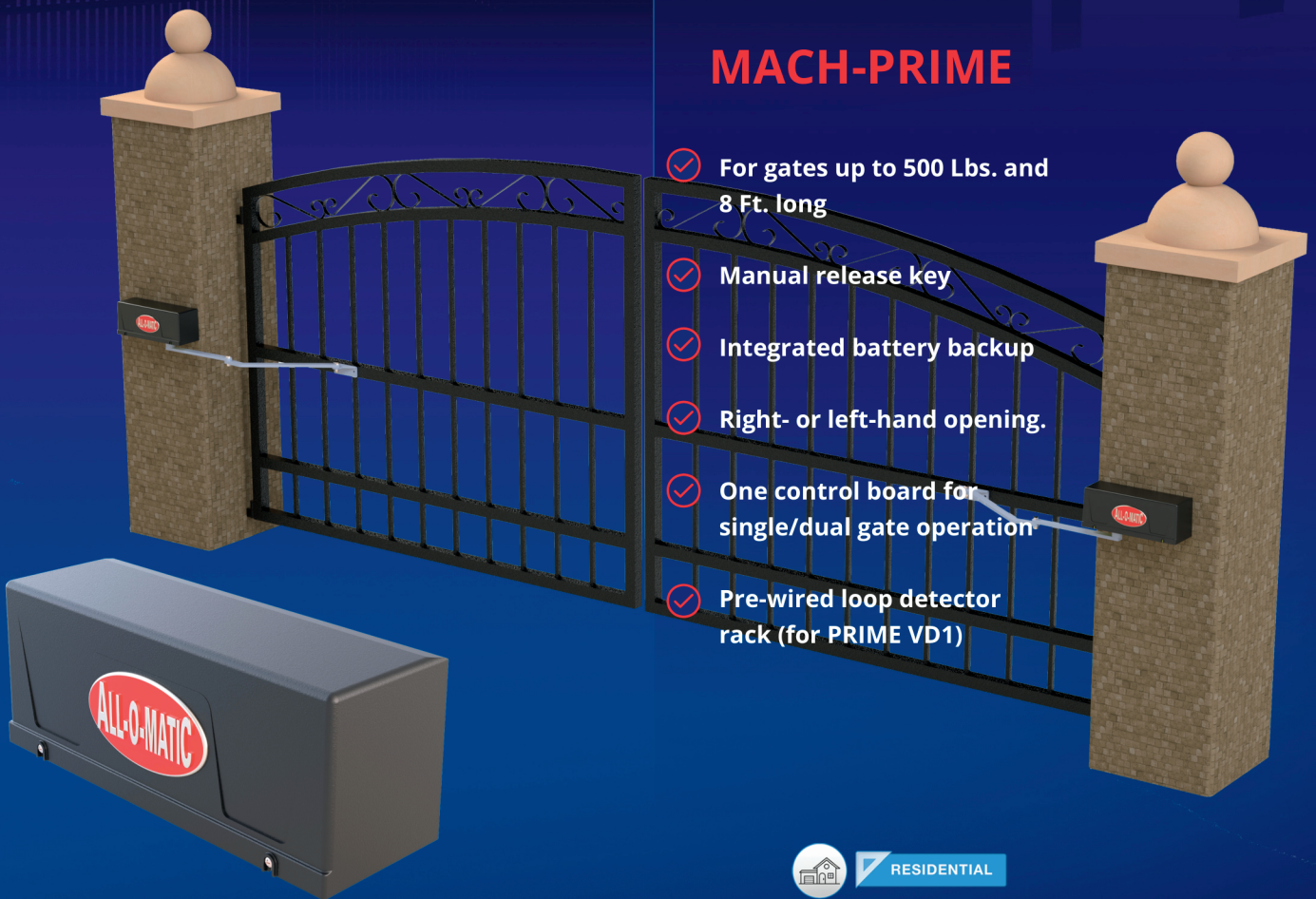
MACH-PRIME

SWING GATE OPERATOR

The NEW compact **Column Mount DC Swing Gate Operator** designed for light, residential applications.

MACH-PRIME

- ✓ For gates up to 500 Lbs. and 8 Ft. long
- ✓ Manual release key
- ✓ Integrated battery backup
- ✓ Right- or left-hand opening.
- ✓ One control board for single/dual gate operation
- ✓ Pre-wired loop detector rack (for PRIME VD1)



RESIDENTIAL



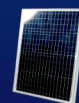
QUICK ARM RELEASE



INNOVATIVE
CIRCUIT BOARD



PRE-WIRED
LOOP RACK



24VDC SOLAR
POWER OPTION

SLIDERS | SWINGERS | OVERHEADS

The standard by which all other automatic gate operators are measured.

SCAN FOR
PRODUCT
INFORMATION

UL 325 2018
COMPLIANT

UL 991
COMPLIANT

CSA C22.2 #247





818-787-1988

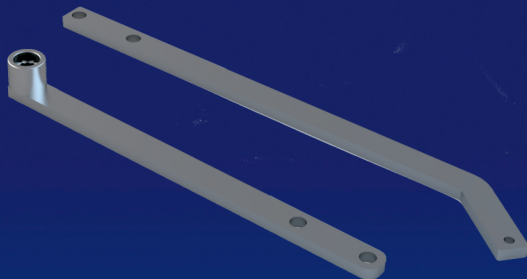
allomatic.net

SCAN FOR
PRODUCT
INFORMATION

MACH-PRIME

SWING GATE OPERATOR

SPECS



- Max Gate Weight** 500 lbs.
- Max Gate Length** 8 feet
- Warranty** 3 year residential
- Motor** 24 VDC gearhead motor
- Gate Speed** Adjustable 14-25 seconds per 90° opening
- Power Options** 115/230 VAC single phase and 24 VDC solar panel
- Duty Cycle** 30 minutes (intermittent)
- Battery Backup** Integrated, with (2) 7Ah 12VDC batteries.
- Battery Backup Capacity** Capacity up to 250 cycles
- Temperature Range** -20 to 160°
- Dimensions** Operator: D 5" X L 15" X H 5.75"
Control box: H 16.750" L 19.6875" X D 7.875"
- Emergency Release** Manual Release Key
- Breaker Requirement** 20 amp dedicated



RESIDENTIAL

AVAILABLE ACCESSORIES



AML-1200B
Mag Lock



GH-1500
Hinges



Fire
Boxes



Solar
Panel



PRIME VD-1
Loop Detector

The Warrantor warrants the MACH-PRIME Gate Operator. ALL-O-MATIC INC warrants its gate openers for a period of three (3) years in residential installation to be free from defects in circuitry, motor, gear box and workmanship. This warranty applies from the date of purchase to the original owner. Warrantor will repair or, at its option, replace any device which it finds to require service. This device must be sent to the warrantor at the consumer's expense. The warrantor will return the repaired or replaced unit to the customer at the consumer's expense. Labor charges for dealer service or replacement are the responsibility of the owner. These warranties are in lieu of all other warranties either expressed or implied, and ALL-O-MATIC INC shall not be liable for consequential damage. All implied warranties of merchantability and or fitness for a particular purpose are hereby disclaimed and excluded. This limitation is not valid in jurisdictions which do not allow limitation of incidental or consequential damages or limitation of warranty periods. Caution in order to obtain this policy, please complete the registration card and send it by mail within 30 days of purchasing from ALL-O-MATIC INC. or your INSTALLER. If not registered only a one year warranty on all parts will be provided.

The standard by which all other automatic gate operators are measured.

UL 325 2018 COMPLIANT UL 991 COMPLIANT

CSA C22.2 #247

