

# 85870

¾ HP AC Chain Drive Wi-Fi® Garage Door Opener  
with Integrated Bluetooth® Technology

---



**PRODUCT GUIDE**

**LiftMaster®**

POWERED BY myQ.

# 85870

¾ HP AC Chain Drive Wi-Fi  
Garage Door Opener with  
Integrated Bluetooth Technology

---



## Popular features

### AC Motor

Purposefully designed and built to last.

### myQ® Connected

Control, secure and monitor the garage from the myQ app anytime, from anywhere.

### Secure in-garage delivery

Enables Amazon Key In-Garage Delivery - free for Amazon Prime members.

### Security+ 2.0®

Safeguards garage access by sending a new code with every click of the remote.

### Invisible light beam system

Auto-reverses the garage door if there is an obstruction.

### Posilock® protection

Electronically protects against forced openings of the door.

### Motion detection

Lights the way automatically for additional safety.

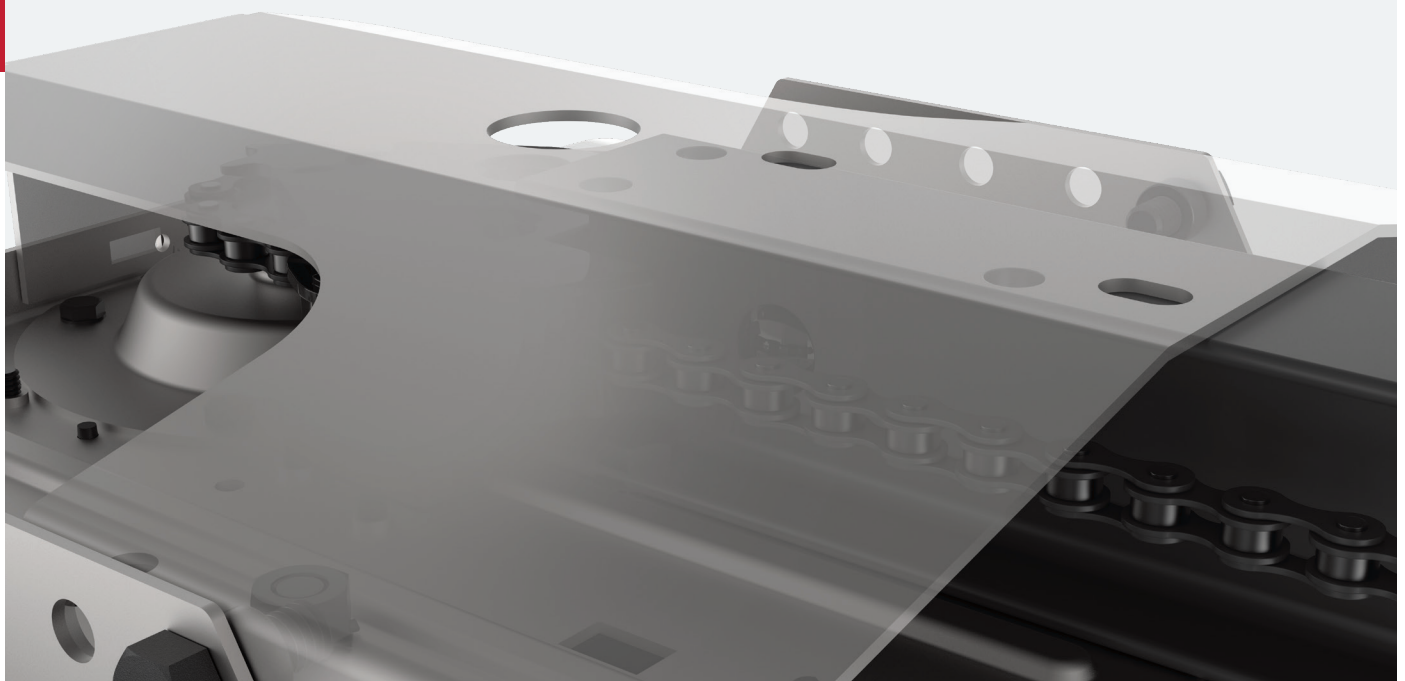
### Integrated Bluetooth technology

Reduces setup time and makes it even easier to connect to the myQ app, other myQ devices and smart home technology solutions.

---

## Maximum power

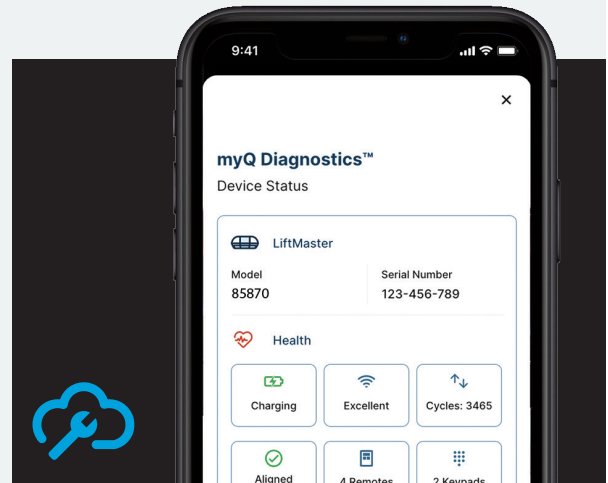
Includes our ultra-strong motor, sturdy I-beam rail system, reinforced chassis, plus powerful chain drive to lift the heaviest of garage doors.





### Do more with myQ

Use the myQ app to control, secure and monitor your garage and conveniently share and manage access to your home without sharing passcodes or keys. Also, take the hassle out of service repair and easily connect to a trusted Dealer through the myQ app.



### myQ Diagnostics

As often as you go in and out of your garage each day, it can be stressful when your garage door doesn't open. myQ Diagnostics, in the myQ app, provides real-time insights for your garage door via the Health Report. You will be sent alerts if an issue arises and connected to professional services if needed.

### In the box

**893MAX**



**3-Button Remote Control**

Operates up to 3 openers or myQ light accessories. Safeguards your home with Security+ 2.0.

**880LMW**



**Smart Control Panel®**

Displays time and temperature, allows for easy programming and automatically activates light when you enter the garage.

### Security add-on

**841LM**



**Automatic Garage Door Lock**

Deadbolt locks the garage door, making it virtually impenetrable (2 max., sold separately).

## Specifications

### Motor

3/4 Horsepower AC, 1,625 RPM, automatic thermal protection, permanent lubrication

### Mechanics

- Steel chassis, I-beam and trolley, full chain drive mechanism (16:1 gear reduction and adjustable door arm)
- Auto-force adjustment for changing weather and environmental conditions
- Electronic limits for easy setup
- Dual sprocket: 6-tooth, 8-tooth
- AC Wi-Fi logic board with built-in surge suppressor (for replacement logic boards, order part 050ACTBLK)
- 2 Lock terminals allow up to 2 locks to be connected (sold separately)

### Power

120V AC, 60 Hz voltage, 5A current rating, UL® Listed, 6' power cord (3-prong)

### Speed

8th Sprocket: 7" per second upward,  
7" per second downward  
6th Sprocket: 5" per second upward,  
7" per second downward

### Lighting

Max. 2 100-watt lightbulbs; Adjustable time; Solid-state delay; Enhanced CFL (compact fluorescent) compatible, max. 26 watts.

### Dimensions

Rail Options:	7'	8'	10'	12'	14'
Installed Length:	125"	140"	164"	189"	213"
Max Opening:	7' 6"	8' 6"	10' 6"	12' 6"	13' 6"

Headroom clearance required: 2"

### Warranty

Lifetime: Motor  
5 Year: Parts  
1 Year: Accessories

### Security+ 2.0

Radio controls:

Operating range: ~200'; Operating temperature: -40°F to 150°F; 3-Button Remote Control (893MAX); Remote Controls Code Format: Security+2.0; Garage Door Opener Format: Security+2.0; Anti-burglary coding; Premium remote control is backwards compatible to all LiftMaster® openers manufactured since January 1993.

Encrypted controls:

Smart Control Panel (880LMW); Timer-to-close; Program remote controls, keypads and myQ accessories; Maintenance alert system; Easy Wi-Fi setup.

### myQ Radio

902-928 MHz 50-Channel FHSS (frequency hopping spread spectrum); Provides 2-way communication from garage door opener and myQ accessories; Enables monitoring and control of garage door openers via smartphone or tablet.

### HomeLink® compatible (version 4.0 or higher)

May require an external adapter depending on the model and year of your vehicle. Visit HomeLink.com for additional information.

### Convenience and safety

Automatic garage door lock capable (2 max.); Alert-2-close/unattended close operation†; Motion detection feature on control panel; Emergency/quick release; Automatic trolley reconnect; Ventilation/pet opening; Down safety reverse; Up safety stop; Maintenance alert system; Garage door opener capacity of up to 40 remote controls, 4 keyless entry systems and 16 myQ devices.

### Carton 1 shipping details

Dimensions: 20" x 12" x 10"

Contents: Smart Control Panel (880LMW); 3-Button Remote Control (893MAX); Garage Door Opener Head (85870), The Protector System® Safety Reversing Sensors; Chassis support bracket; Safety sensor extension brackets  
Weight: 28 lbs.

### Carton 2 shipping details

Dimensions: 10'4" x 5" x 5" (for 7' rail)

Contents: Assembled Solid-Steel Chain I-beam  
Weight: 33 lbs.

### Carton 3 shipping details (not included - optional accessory)

Dimensions: 8" x 4.5" x 4"

Contents: Automatic Garage Door Lock (841LM)  
Weight: 3 lbs.



## For purchase and professional install

Visit [LiftMaster.com](https://www.liftmaster.com)

### For partners

Orders: 800.282.6225 | Support: 800.528.2806 | Self service: [LiftMasterTraining.com](https://www.liftmaster.com/training)

†WARNING: to reduce the risk of injury to persons — ONLY enable Timer-to-Close and myQ remote operation features when opener is installed on a sectional door.

© 2022 The Chamberlain Group, LLC. All Rights Reserved.

LiftMaster, the Liftmaster logo, myQ and the myQ logo are registered trademarks of The Chamberlain Group, LLC. UL® and the UL logo are trademarks of UL LLC. Wi-Fi® is a registered trademark of Wi-Fi Alliance. HomeLink® and the HomeLink House® logo are registered trademarks of Gentex Corporation. The Bluetooth® word mark and logos are registered trademarks owned by Bluetooth SIG, Inc.  
LMGDENPG85870 03/22