

powermaster

MH

Medium Duty V-belt Hoist Operator designed for use on Sectional Doors and Rolling Service Doors and Grilles.

STANDARD FEATURES

- 115 VAC PSC MOTOR WITH FULL OVERLOAD PROTECTION
- LIMIT 10 CYCLES PER HOUR
- SOLID STATE CIRCUITRY WITH INSTANT REVERSING MOTOR WIRING
- ONBOARD OPEN/CLOSE/STOP BUTTONS FOR SERVICE AND ADJUSTMENTS
- AUTO-DETECT MONITORED PHOTO BEAM
- FLOOR LEVEL DISCONNECT WITH ELECTRICAL INTERLOCK AND CHAIN HOIST FOR MANUAL OPERATION
- V-BELT AND CHAIN REDUCTION



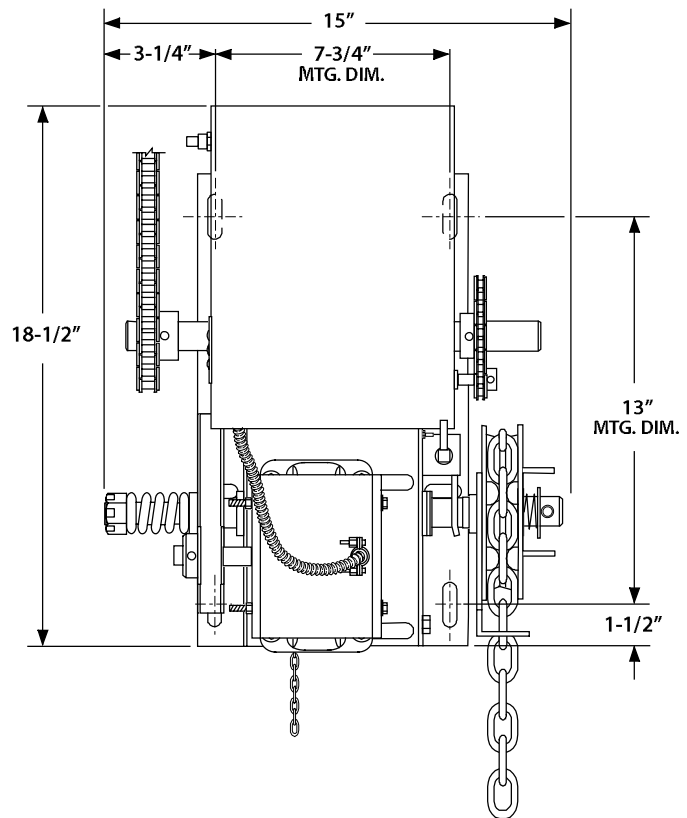
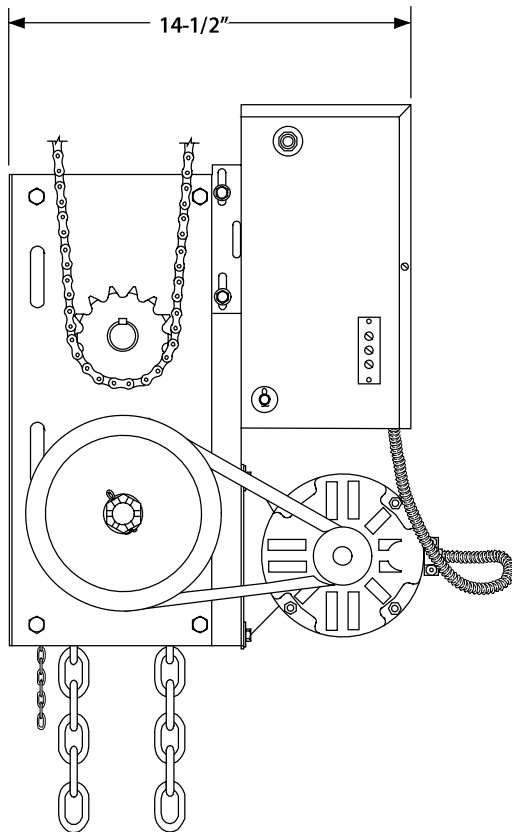
*Complete selection of control stations
& accessories are available.*

All door operators are required to have a monitored safety system, such as monitored photo eyes and/ or monitored 2 or 4 wire obstruction sensing edge. In addition, an ancillary device may be used. The primary device must be a constantly monitored, anti entrapment/safety device.

 [Facebook.com/PowerMasterOperators](https://www.facebook.com/PowerMasterOperators)

www.PowerMasterNY.com
SERVICING THE INDUSTRY SINCE 1969

SPECIFICATIONS & FEATURES



AVAILABLE HORSE POWER: 1/2 HP

POWER OPTIONS: 115 VOLTS, 1 PHASE

SELECTABLE OPERATING MODES B2, C2, D1, E2, T, TS

3-BUTTON NEMA 1 CONTROL STATION INCLUDED

POSITIVE CHAIN DRIVEN ROTARY LIMIT SWITCHES

#41 ROLLER CHAIN AND DRIVE SPROCKET INCLUDED

ADJUSTABLE TORQUE LIMITING CLUTCH

BAKED ON, BLACK POWDER COAT FINISH

SHIPPING WEIGHT: APPROX. 85 LBS

CAUTION

A moving door can cause serious injury or death! Carefully read and follow all safety instructions, precautions, and guidelines when installing and using this product. Motorized doors are for vehicles only. Pedestrians must use a separate entrance. **NO ONE SHOULD CROSS THE PATH OF A MOVING DOOR!** Proper reversing devices must be installed to avoid all hazards and entrapment. Eliminate all hazards and entrapment areas. Warning signs must be permanently installed and visible to traffic and pedestrians. Never allow children to operate or play with controls. Follow UL 325 and ASTM F220-02 standards. Do not install this product unless all hazards and entrapment points are protected.

